

Title:

i-Controller Sub-Panel Assembly Wiring Guide

Overview

FLō units that contain an i-Controller that were produced from the factory after September 1st, 2022 will arrive on-site without the i-Controller sub-panel assembly fully wired.

It will be the FLō start-up contractors' responsibility to connect the 4 24V isolation transformers wires to the i-Controller and the i-Controller expansion board before performing the start-up.

Required Tools

Ensure that you bring the following tools to complete the sub-panel assembly wiring

8 ft. 14-16 Gauge Red Wire	Wire Cutters/Strippers
8 ft. 14-16 Gauge Black Wire	Zip Ties
Precision Flathead Screwdriver	Multimeter

i-Controller Sub-Panel Assembly Wiring Steps

1. Ensure power is turned off to the unit before performing any additional steps.
2. Verify power has been shut off using the multimeter.
3. Locate the subpanel and transformer terminal blocks (see figure 1). Points on the blocks should be numbered 41, 42, 43, and 44.

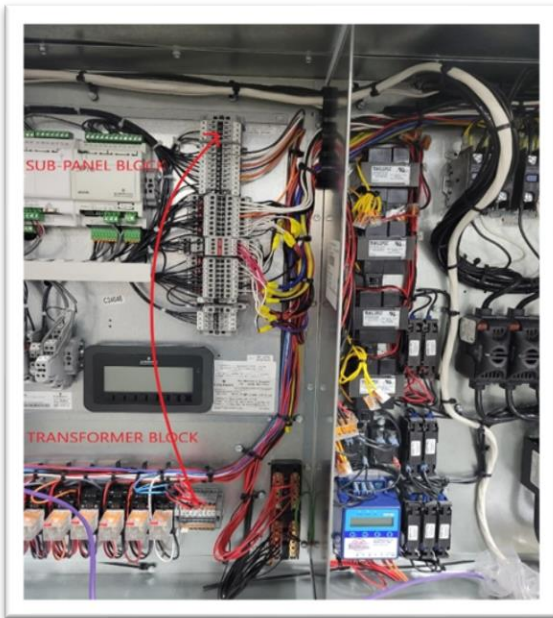


Figure 1. Sub-Panel & Transformer Blocks

4. Starting with the transformer terminal block at the bottom of the low voltage area (see figure 2), place a stripped end of black wire into point 41.

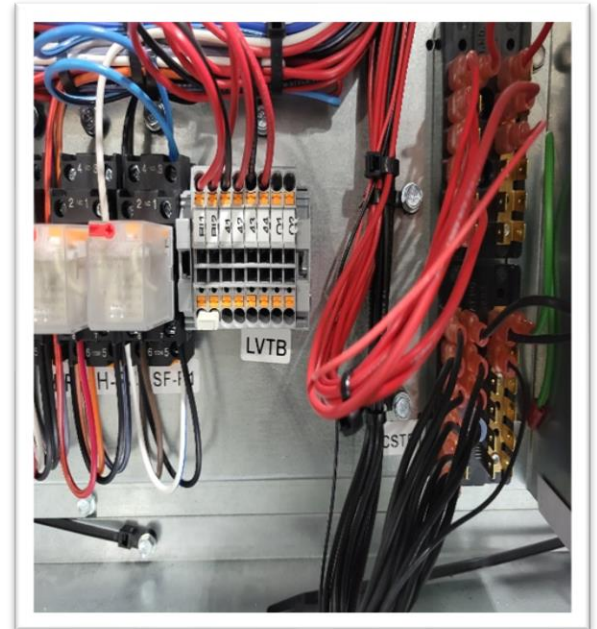


Figure 2. Transformer Block Wiring

5. Trace the wire up to the subpanel terminals, and cut off to desired length, making sure to leave enough wiring to secure to existing harnesses once complete.
6. Next, place a stripped red wire into point 42. Cut to same length as black wire in 41.

Title:

i-Controller Sub-Panel Assembly Wiring Guide

7. Repeat process with points 43(black) and 44 (red).
8. Now strip opposite ends and wire all wires that were placed into transformer terminals, up to the sub panel terminals (see figure 3) matching terminal numbering (41 to 41, 42 to 42, 43 to 43, 44 to 44).
9. Ensure all connections are tight and secured any loose wiring to existing wiring bundles/harnesses with zip ties.
10. Before cycling power back on, use a multimeter to ohm out each 4 points on the sub-panel to unit casing. You should not have any continuity.
11. If continuity exists, recheck work or call Flō Technical Support at 888-598-1198 Opt. 1.



Figure 3. Sub-Panel Block Wiring